

BRENTFORD, ISLEWORTH & CHISWICK Chronicle

YOUR NO. 1 FREE LOCAL PAPER!

COACH HOLIDAY
Travel Offer **Newmarket Holidays**
Chester & the Tatton Park Flower Show
 Departs 27 July 2013 2 days from £119.00
 Bursting with summer colour, the Tatton Park Flower Show is one of the highlights of the gardening year.
www.newmarket.travel/sal15418
 0843 316 1110 code 8AL
Newmarket Promotions Ltd. ABTA V787X. Subject to availability. Single supplement applies. Calls cost 4p per minute.

● BRENTFORD ● ISLEWORTH ● CHISWICK ● OSTERLEY & SURROUNDING VILLAGES YOUR LOCAL EDITION OF THE HOUNSLOW CHRONICLE SERIES



Sticking with tradition

MORRIS dancers help celebrate St George's Day as part of a charity event at the Express Tavern in Brentford.
TURN TO PAGE 24 FOR MORE PICTURES

INSIDE

BRENTFORD FC



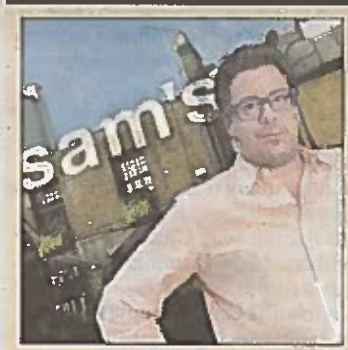
Bees take on Rovers in promotion decider **Pages 8,78,79,80**

BOROUGH

Not even a broken ankle can knock him off course **Page 12**



CHISWICK



He's a star man rating really high **Page 17**

'Get measles jab now'

by Robert Cumber
 robert.cumber@trinitymirror.com

NEARLY a fifth of 16-year-olds in Hounslow are believed to be at risk of catching measles.

The shocking statistic emerged yesterday (Thursday) as plans for a national catch-up programme to increase vaccination levels were announced.

Hounslow has the highest rate of estimated measles susceptibility in north-west London among 16-year-olds, at 18.87 per cent, according to newly formed government body Public Health

England (PHE). The organisation yesterday announced plans to increase vaccination rates against the potentially deadly disease, of which there have been nearly 600 confirmed cases across England and 68 in London during the first three months of this year.

PHE, NHS England and the Department of Health said the new programme would aim to prevent measles outbreaks by vaccinating as many unprotected 10 to 16-year-olds in time for the next school year.

The programme will see tailored local plans produced to

identify those young people most at risk of measles and vaccinate them at GP practices.

The spread of the disease, which has reached epidemic proportions in parts of Wales and has been linked to one death so far, has been blamed on discredited research suggesting an association between autism and the MMR (measles, mumps and rubella) jab.

Dr Yvonne Doyle, PHE's regional director for London, said: "It is never too late for children and young people to get vaccinated against measles.

"Parents of unvaccinated children, teenagers and young adults who have missed out on MMR should arrange for them to be vaccinated by their GP.

"If you are unsure whether your child has had two doses of the vaccine, speak to your GP who will have a record."

Murad Qureshi, chairman of the London Assembly's health and environment committee, welcomed plans to increase MMR uptake in London, which is the lowest in the country.

Visit www.facebook.com/getvaccinatedEngland for details.

NEWS, SPORT & DEBATE www.hounslowchronicle.co.uk

ON THE WEB

GET THE LATEST NEWS ON ALL THE ACTION AT BRENTFORD FC



www.hounslowchronicle.co.uk/brentfordfc

Lovell Chohan
 SOLICITORS & MEDIATORS
Mediation
 effectively settling your difference's and disputes without going to court

ACCREDITED Family Mediation ACCREDITED Civil & Commercial Mediation

family, civil, commercial & work placement - it's impartial, practical & confidential
 Call **020 8814 9981** www.lovellchohan.com
 Tudor House 44-50 Bath Road Hounslow TW3 3EB

Dear Mum & Dad, I need help with my 11+ Grammar Entrance Exam...

11+ TUITION SPECIALISTS
 11+ Grammar Entrance Key Stage 1, 2 & 3 GCSE English Maths & Science

Call **07956 132 886**
 0800 048 8658
Redwoodtutors
www.redwoodtutors.net

Hounslow Cranford & Southall